

Public Document Pack

PRESENTATION SLIDES

DEVELOPMENT MANAGEMENT COMMITTEE - WEDNESDAY, 11TH NOVEMBER, 2020

The following presentation slides were used at the Development Management Committee meeting.

Planning Applications (Pages 1 - 74)

This page is intentionally left blank

We'll be starting soon

Development Management Committee

1st November 2020

Page 1



AGENDA ITEM NO. 3

Development Management Committee

11th November 2020

Development Management Committee

Attendance & Declarations of interest (agenda item 1)

Development Management Committee

Agenda item 2: Minutes

Development Management Committee

Agenda item 3: Planning Applications

Development Management Committee

Item 3: 20/00149/FULPP

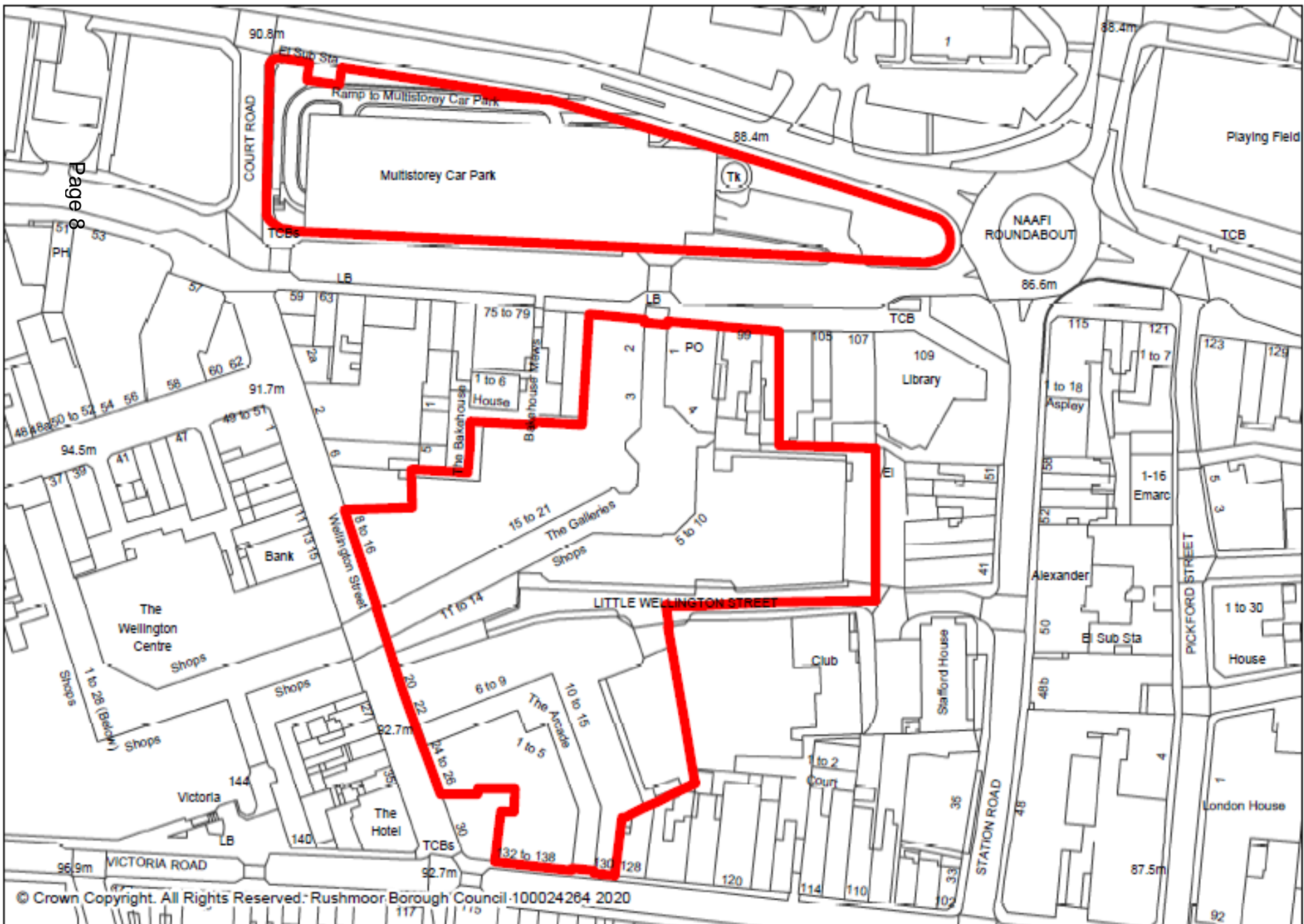
Units 2A & 3, Blackwater Shopping Park, 12
Farnborough Gate, Farnborough

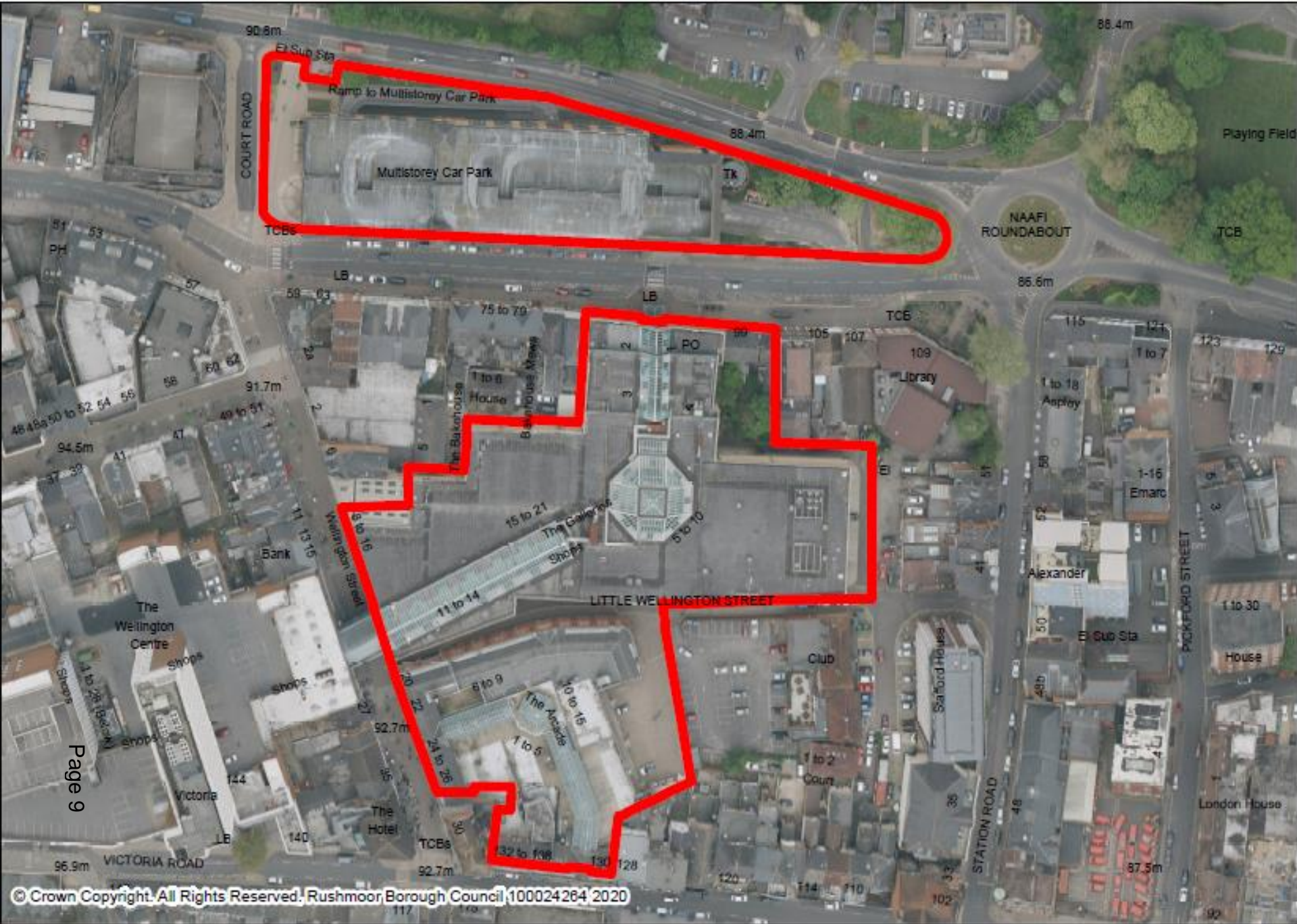
**Recommendation is to defer this
application**

Development Management Committee

Item 4 : 20/00508/FULPP

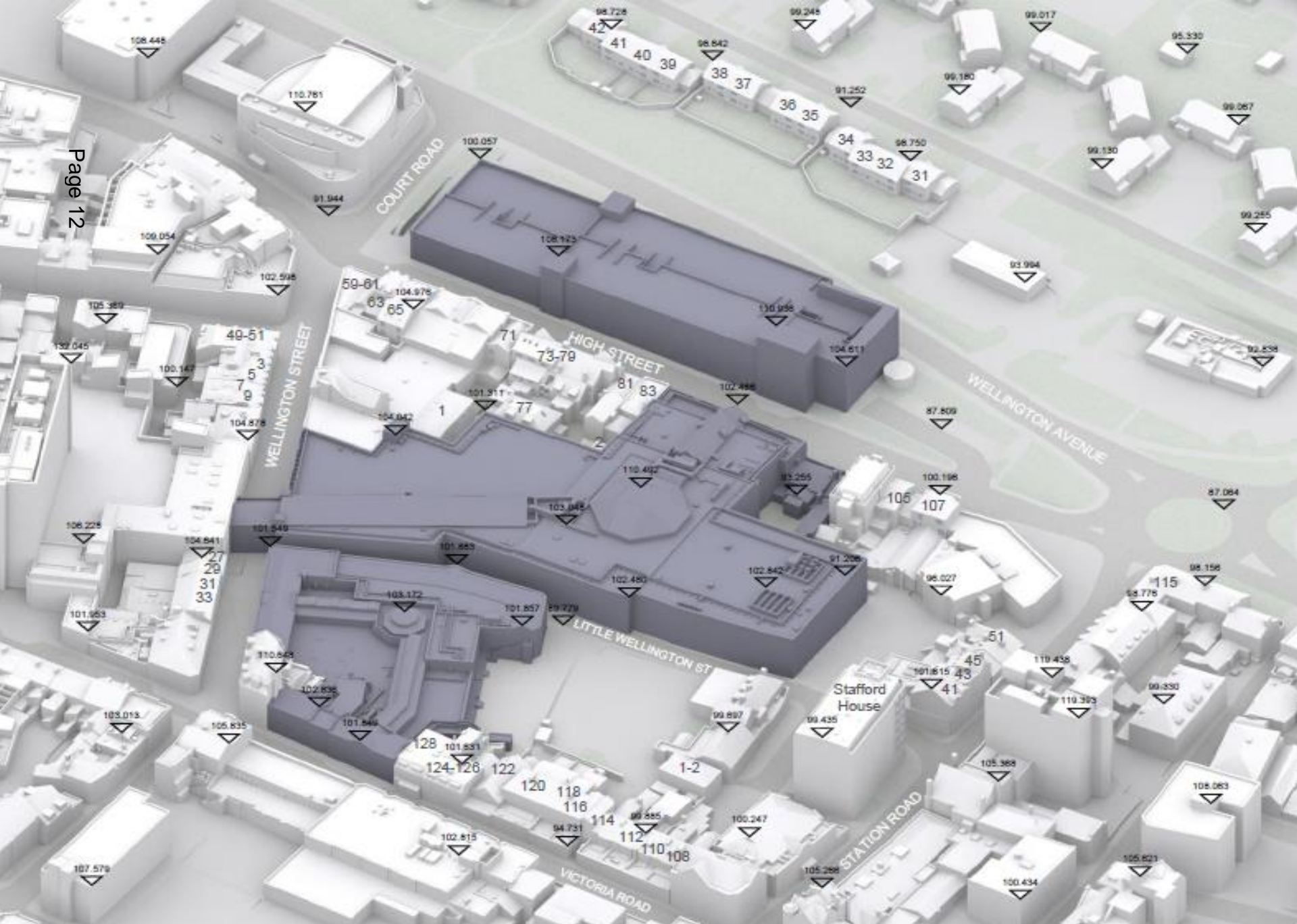
The Galleries, High Street, Aldershot







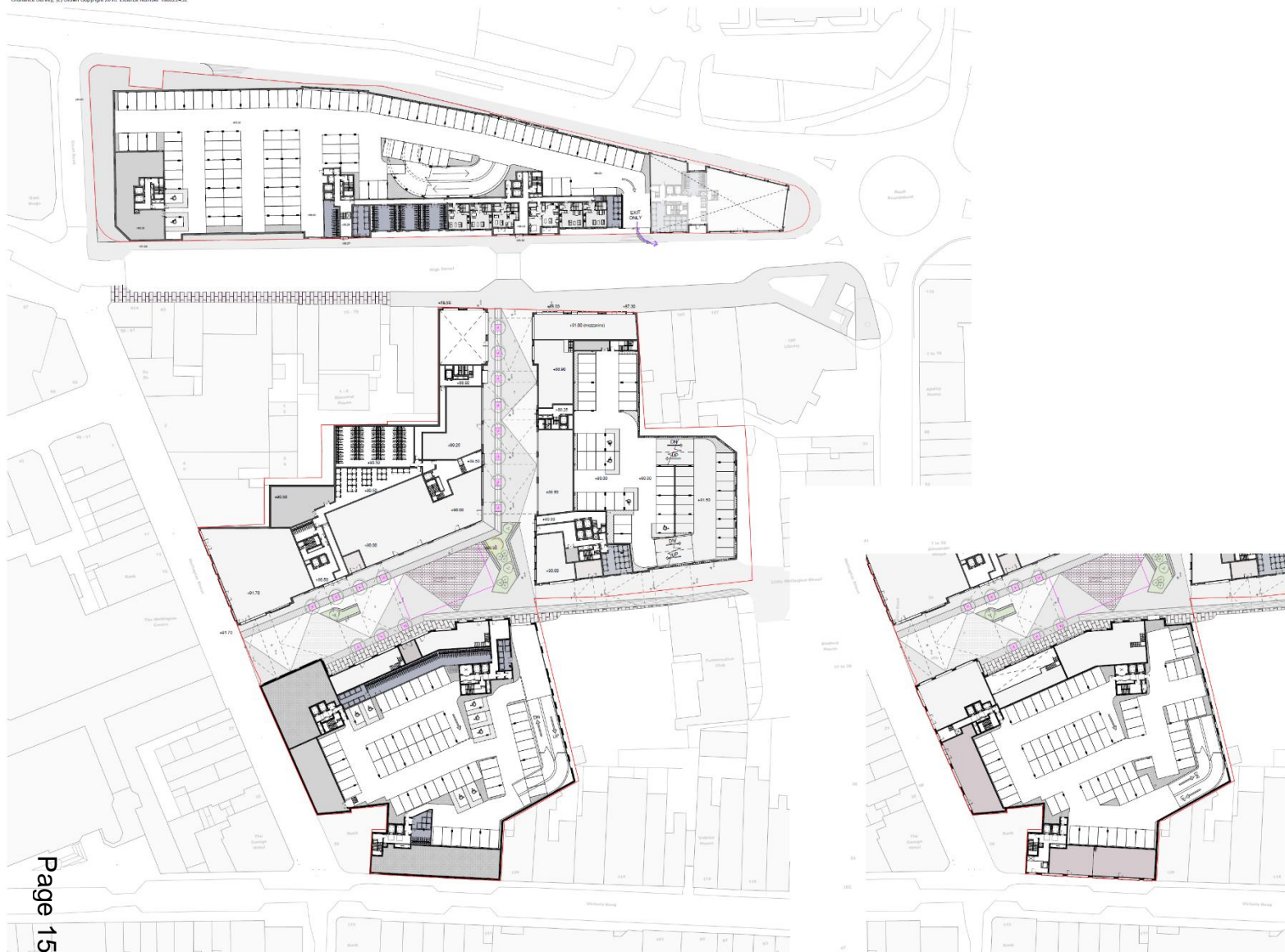








Note
 All contractors must visit the site and be responsible for taking and checking dimensions.
 All construction information should be taken from signed dimensions and checked dimensions.
 Any discrepancies between drawings, specifications and site conditions must be brought to the attention of the supervising officer.
 This drawing & the works depicted are the copyright of JTP.
 This drawing is prepared for this specific project stage in the Drawing Status section below and is not intended to be used for any other purpose. Whilst all electronic checks are made to ensure drawings are accurate, JTP accepts no liability for any reliance placed on, or use made of, this plan by anyone for purposes other than those stated in the Drawing Status below.



Page 15

Phase 1_Proposed Plan - Level 00
 1 : 500

Phase 1_Proposed Plan - Arcade Mezz Level
 1 : 500

PO5 2024-02-22 PLANNING SUBMISSION REVISE	KXP	KX
PO4 2019-07-31 Design Fence Issue to RBC	SO*	KX
PO3 2019-04-05 ORA1 Design Process Issue	KXP	KX
PO2 2018-07-11 ORA1 Design Fence	KXP	KX
PO1 2017-05-09 Design Process Issue	KXP	KX

Rev.	Date	Description	Drawn	Chk'd
Drawing Status				

PLANNING

Client

JTP Studios, Unit 5
 The Swan Warehouse
 Pinner Road
 London, E5 12 2AF
 +44 (0)20 7817 1760
 www.jtp.co.uk

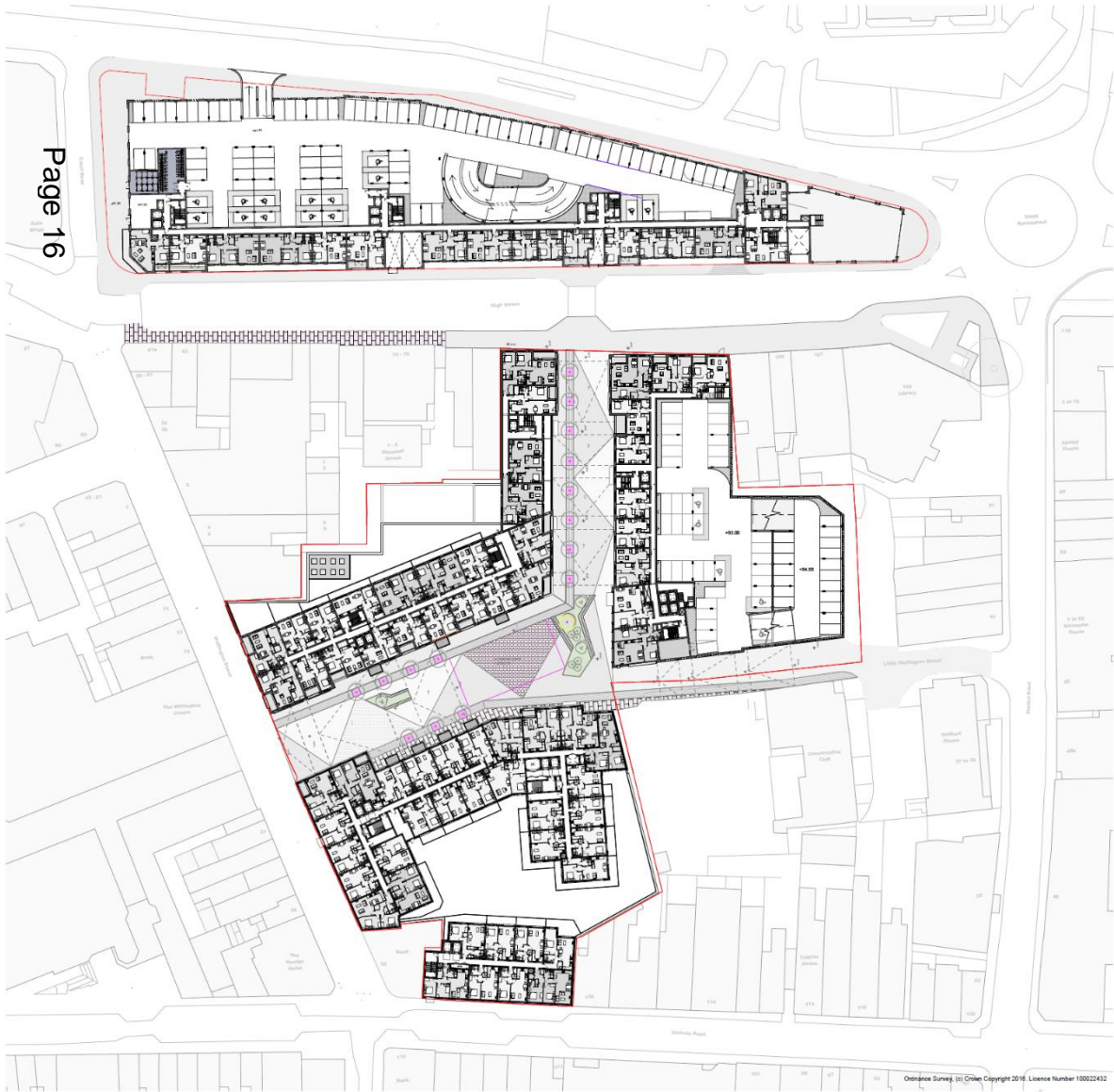
Project
The Galleries, Aldershot

Drawing Title
Proposed Plan - Level 00

Scale @A1: 1 : 500 Job Ref: 00817B
 Drawing No: MP_PP_002 Revision: P05
 Scale Bar: 0 2 4 6 8 10 m

Sheet Code
 00817B_JTP_MP_PP_002_Proposed Plan - Level 00_P05

Notes
 All contractors must visit the site and be responsible for taking and checking dimensions.
 All construction information should be taken from figured dimensions only.
 Any discrepancies between drawings, specifications and site conditions must be brought to the attention of the supervising officer.
 This drawing & the works depicted are the copyright of JTP.
 This drawing is prepared for the specific project stage in the Drawing Status section below and it is not intended to be used for any other purpose. Whilst all reasonable efforts are used to ensure drawings are accurate, JTP accepts no liability for any reliance placed on, or use made of, this plan for any purposes other than those stated in the Drawing Status below.



PO0	2020-05-22	PLANNING SUBMISSION ISSUE	RXP	KM
PO4	2019-01-21	Design Freeze Issue 1/R6	RDP	KM
PO3	2019-04-16	DRAFT Design Freeze Issue	RXP	KM
PO2	2018-01-11	DRAFT Design Freeze	RXP	KM
PO1	2017-06-09	Design Freeze Issue	RXP	KM

Rev	Date	Description	Drawn	Chk

Drawing Status
PLANNING



JTP Studios, Unit 5
 The Run Warehouse
 Parkingside Street
 London, E1W 2AP
 UK Tel: 020 7171 1700
 www.jtp.co.uk

Project
The Galleries, Aldershot

Drawing Title
Proposed Plan - Level 01

Scale @A1	1 : 500	Job Ref.	00817B
Drawing No.	MP_PP_003	Revision	PO5



Sheet Code
 00817B_JTP_MP_PP_003_Proposed Plan - Level 01_PO5

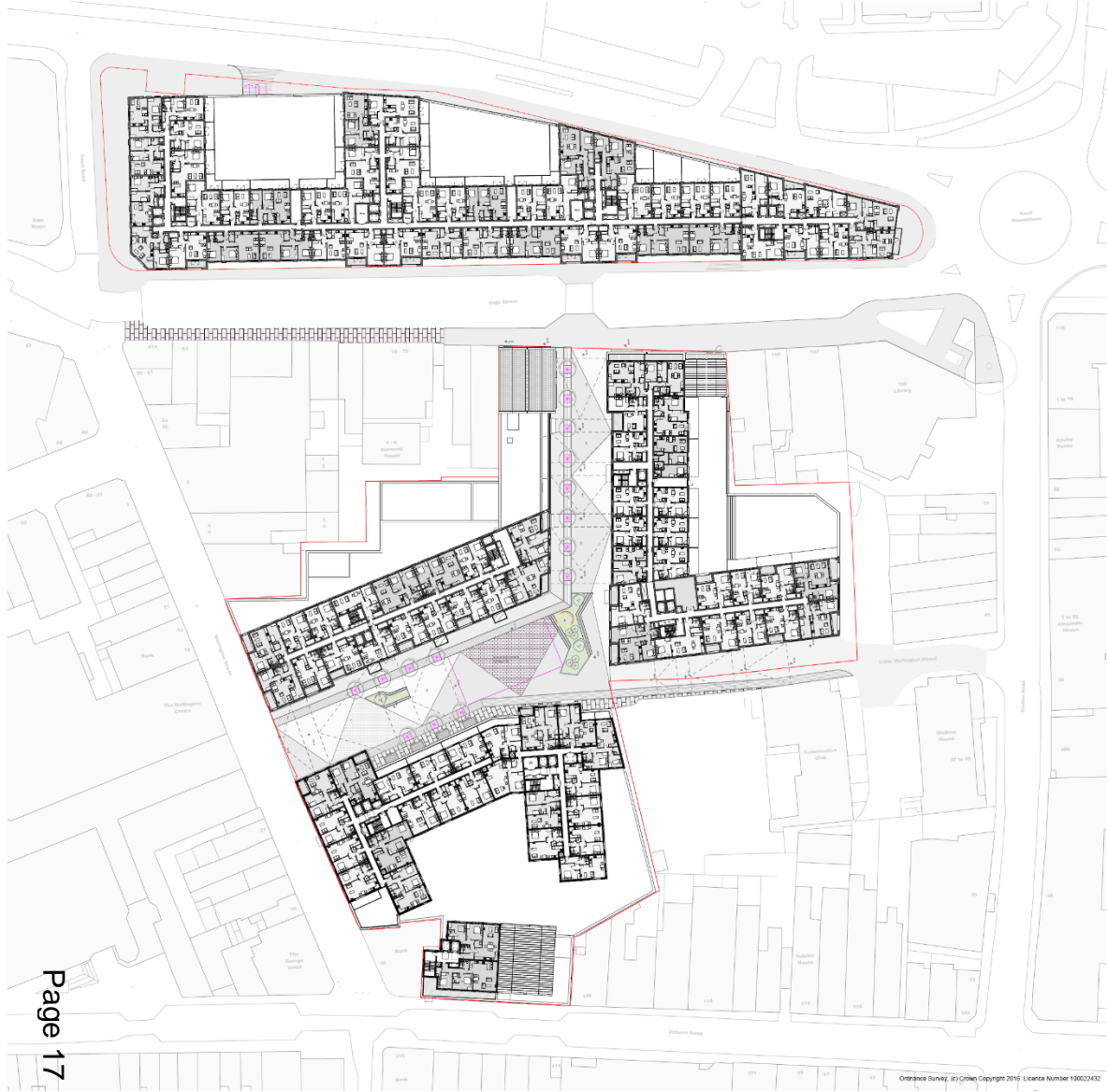
Phase 1_Proposed Plan - Level 01
 1 : 500

Ordnance Survey (c) Crown Copyright 2016. Licence Number 100022412

Notes

All contractors must visit the site and be responsible for taking and checking dimensions.
 All construction information should be taken from figured dimensions only. Any discrepancies between drawings, specifications and site conditions must be brought to the attention of the supervising officer.
 This drawing & the works depicted are the copyright of JTP.

This drawing is prepared for the specific project design in the Drawing Status section below and it is not intended to be used for any other purpose. Whilst all reasonable efforts are made to ensure drawings are accurate, JTP accepts no liability for any reliance placed on, or use made of, this plan by anyone for purposes other than those stated in the Drawing Status below.



Page 17

Phase 1_Proposed Plan - Level 04
 1 : 500

Ordnance Survey, 101 Colindale Avenue, London NW9 1NS. Copyright 2016. Licence Number 100022432

PO5	2020-05-22	PLANNING SUBMISSION ISSUE	ROOP	KM
PO4	2019-07-23	Design Frame Issue 10/18/19	ROOP	KM
PO3	2019-04-16	DRAM T Design Frame Issue	ROOP	KM
PO2	2018-07-11	DRAM T Design Frame Issue	ROOP	KM
PO1	2017-06-09	Design Frame Issue	ROOP	KM

Rev	Date	Description	Drawn	CHKD

Drawing Status
PLANNING

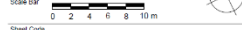
Client

JTP Studios, Unit 5
 The Run Warehouse
 Ferrisburgh Street
 London, E11V 2AP
 +44 (0) 20 710 1510
 www.jtp.co.uk

Project Name
The Galleries, Aldershot

Drawing Title
Proposed Plan - Level 04

Scale @A1	1 : 500	Job Ref.	00817B
Drawing No	MP_PP_006	Revision	P05



Sheet Code
 00817B_JTP_MP_PP_006_Proposed Plan - Level 04_P05



Notes
 All contractors must visit the site and be responsible for taking and checking dimensions.
 All construction information should be taken from figures, dimensions and drawings only. Any discrepancies between drawings, specifications and site conditions must be brought to the attention of the supervising architect.
 This drawing & the works proposed are the copyright of JTP.
 This drawing is prepared for the specific project stated in the Drawing Status section below and it is not intended to be used for any other purpose. Whilst all reasonable efforts are used to ensure drawings are accurate, JTP accepts no liability for any reliance placed on, or use made of, this plan by anyone for purposes other than those stated in the Drawing Status below.

Phase 1_Proposed Plan - Level 06
 1 : 500

Ordnance Survey. (c) Crown Copyright 2016. Licence number 100022632

POS	2020-05-22	PLANNING SUBMISSION ISSUE	ROF	KM
POS	2019-02-21	Design Freeze Issue to IBC	ROF	KM
POS	2018-04-16	DRAFT Design Freeze Issue	ROF	KM
POS	2018-02-11	DRAFT Design Freeze	ROF	KM
POS	2017-08-09	Design Freeze Issue	ROF	KM

Rev	Date	Description	Drawn	CHK'd

Drawing Status
PLANNING



Client
The Galleries, Aldershot

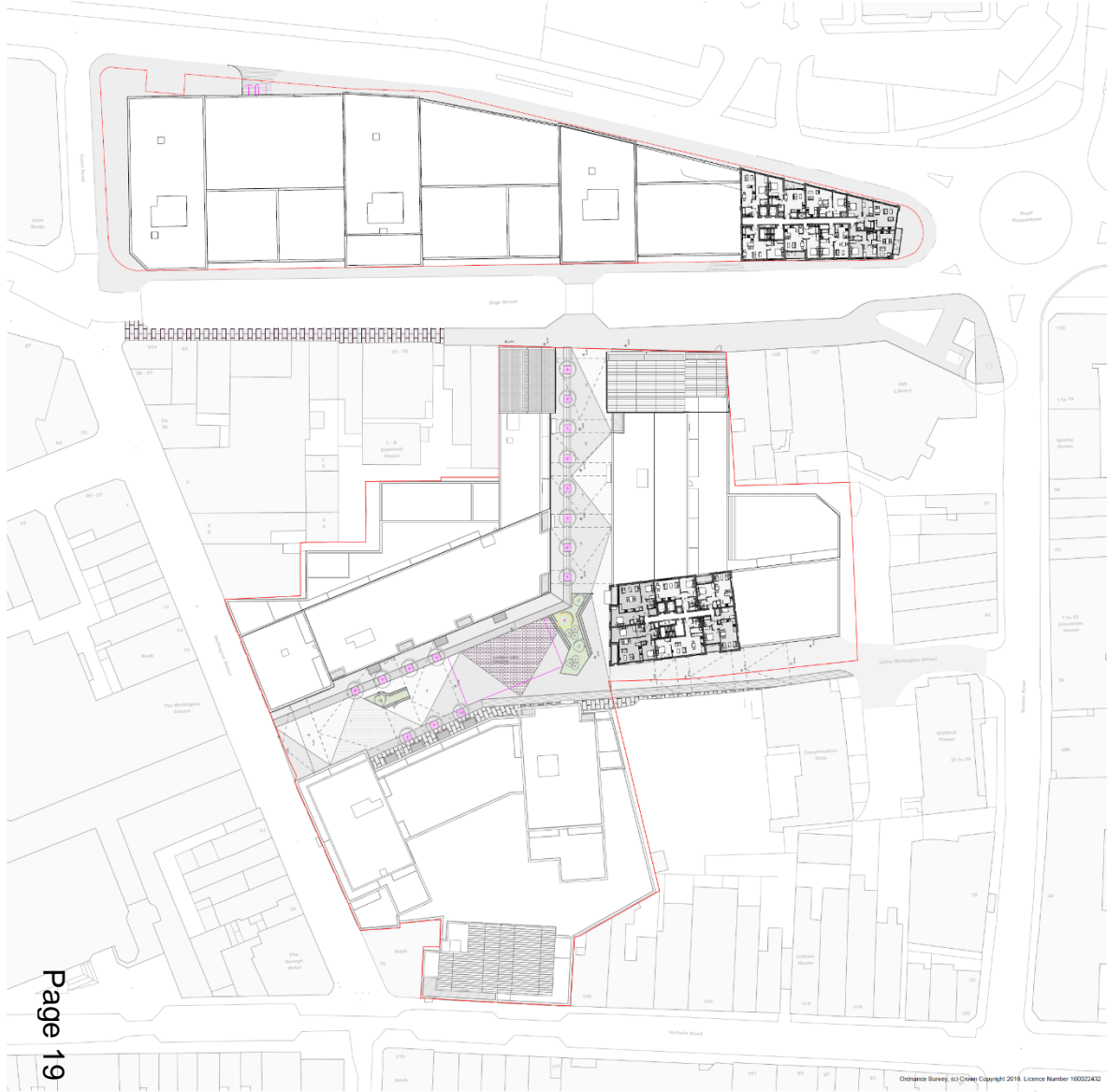
Drawing Title
Proposed Plan - Level 06

Scale @A1	1 : 500	Job Ref.	00817B
Drawing no	MP_PP_008	Revision	POS



Sheet Code
 00817B_JTP_MP_PP_008_Proposed Plan - Level 06_POS

Notes
 All contractors must visit the site and be responsible for taking and checking dimensions.
 All construction information should be taken from figured dimensions only. Any discrepancies between drawings, specifications and site conditions must be brought to the attention of the supervising architect.
 This drawing & the works depicted are the copyright of JTP.
 This drawing is prepared for the specific project listed in the Drawing Status section below and it is not intended to be used for any other purpose. Whilst all reasonable efforts are used to ensure drawings are accurate, JTP accepts no liability for any reliance placed on, or use made of, this plan by anyone for purposes other than those stated in the Drawing Status below.



Page 19

Phase 1_Proposed Plan - Level 08
 1 : 500

Ordnance Survey, © Crown Copyright 2016, Licence Number 100022422

Rev	Date	Description	Drawn	CHKD
P05	2020-05-22	PLANNING SUBMISSION ISSUE	KMP	KM
P04	2019-07-31	Design Freeze Issue to RDC	RDP	KM
P03	2019-04-16	CRAM1 Design Freeze Issue	KMP	KM
P02	2018-02-11	CRAM1 Design Freeze	KMP	KM
P01	2017-05-09	Design Freeze Issue	KMP	KM

Rev	Date	Description	Drawn	CHKD

Drawing Status
PLANNING

Client

JTP Studios, Unit C
 The Run Warehouse
 Pennington Street
 London, SE10 2AP
 +44 (0) 20 7617 7700
 www.jtp.co.uk

Project
The Galleries, Aldershot

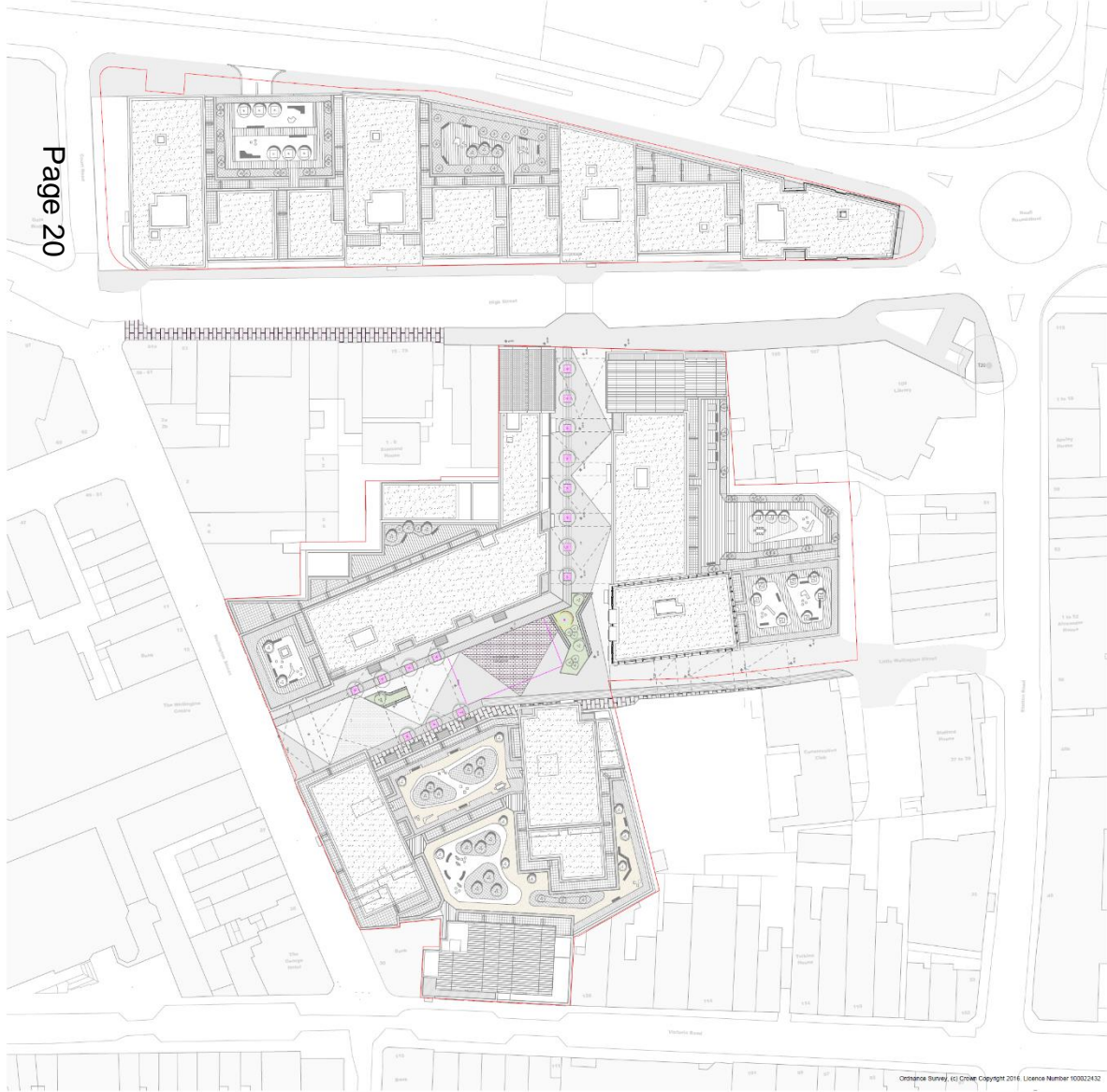
Drawing Title
Proposed Plan - Level 08

Scale @A1 1 : 500 Job Ref: 00817B
 Drawing No: MP_PP_010 Revision: P05



Sheet Code
 00817B_JTP_MP_PP_010_Proposed Plan - Level 08_P05

Notes
 All contractors must visit the site and be responsible for taking and checking dimensions.
 All construction information should be taken from figured dimensions only. Any discrepancies between drawings, specifications and site conditions must be brought to the attention of the supervising architect.
 This drawing is prepared for the specific project shown in the Drawing Status section below and is not intended to be used for any other purpose. Whilst all reasonable efforts are made to ensure drawings are accurate, JTP accepts no liability for any reliance placed on or use made of this plan by anyone for purposes other than those stated in the Drawing Status below.



Phase 1_Proposed Plan - Roof Level

1 : 500

Ordnance Survey, © Crown Copyright 2016. Licence Number 100022432

POS	2020-05-22	PLANNING SUBMISSION ISSUE	ROP	KM
POS	2019-07-28	Design Freeze Issue to H&C	ROP	KM
POS	2019-04-16	DRAFT Design Freeze Issue	ROP	KM
POS	2018-07-15	DRAFT Design Freeze Issue	ROP	KM
POS	2017-08-09	Design Freeze Issue	ROP	KM

Rev	Date	Description	Drawn	CHK

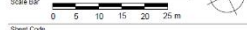
Drawing Status
PLANNING



Project Name
The Galleries, Aldershot

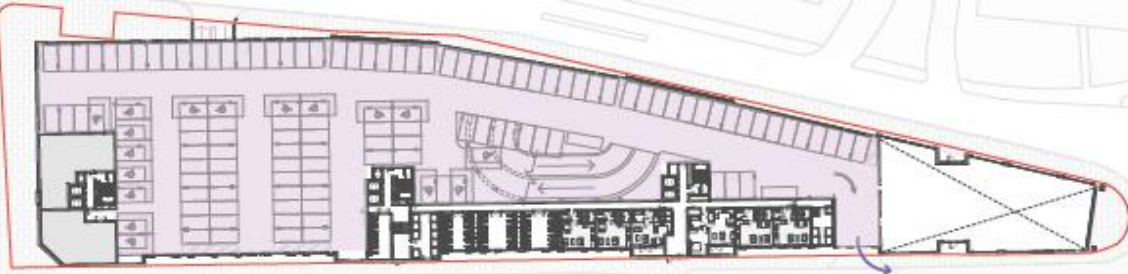
Drawing Title
Proposed Plan - Level RF

Scale @A1	1 : 500	Job Ref	00817B
Drawing No	MP_PP_014	Revision	POS



Sheet Code
 00817B_ITP_MP_PP_014_Proposed Plan - Level RF_POS



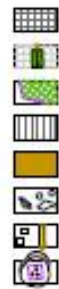


- Car Park Site**
379 Standard Spaces
46 Wheelchair Spaces
- Galleries Site**
251 Standard Spaces
20 Wheelchair Spaces
- Arcade Site**
143 Standard Spaces
7 Wheelchair Spaces

LITTLE WELLINGTON STREET



Hardworks

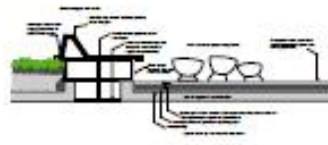
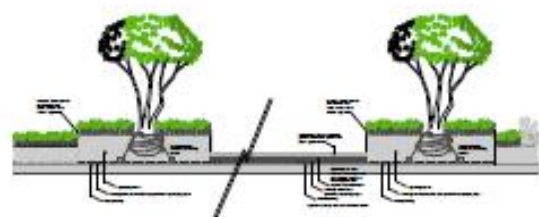
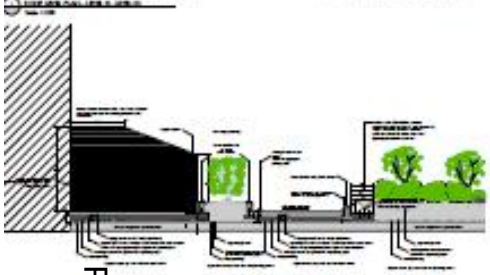


- 1. Paving (see schedule)
- 2. Tree pits (see schedule)
- 3. Paving (see schedule)
- 4. Paving (see schedule)
- 5. Paving (see schedule)
- 6. Paving (see schedule)
- 7. Paving (see schedule)
- 8. Paving (see schedule)
- 9. Paving (see schedule)
- 10. Paving (see schedule)
- 11. Paving (see schedule)
- 12. Paving (see schedule)
- 13. Paving (see schedule)
- 14. Paving (see schedule)
- 15. Paving (see schedule)
- 16. Paving (see schedule)
- 17. Paving (see schedule)
- 18. Paving (see schedule)
- 19. Paving (see schedule)
- 20. Paving (see schedule)
- 21. Paving (see schedule)
- 22. Paving (see schedule)
- 23. Paving (see schedule)
- 24. Paving (see schedule)
- 25. Paving (see schedule)
- 26. Paving (see schedule)
- 27. Paving (see schedule)
- 28. Paving (see schedule)
- 29. Paving (see schedule)
- 30. Paving (see schedule)
- 31. Paving (see schedule)
- 32. Paving (see schedule)
- 33. Paving (see schedule)
- 34. Paving (see schedule)
- 35. Paving (see schedule)
- 36. Paving (see schedule)
- 37. Paving (see schedule)
- 38. Paving (see schedule)
- 39. Paving (see schedule)
- 40. Paving (see schedule)
- 41. Paving (see schedule)
- 42. Paving (see schedule)
- 43. Paving (see schedule)
- 44. Paving (see schedule)
- 45. Paving (see schedule)
- 46. Paving (see schedule)
- 47. Paving (see schedule)
- 48. Paving (see schedule)
- 49. Paving (see schedule)
- 50. Paving (see schedule)
- 51. Paving (see schedule)
- 52. Paving (see schedule)
- 53. Paving (see schedule)
- 54. Paving (see schedule)
- 55. Paving (see schedule)
- 56. Paving (see schedule)
- 57. Paving (see schedule)
- 58. Paving (see schedule)
- 59. Paving (see schedule)
- 60. Paving (see schedule)
- 61. Paving (see schedule)
- 62. Paving (see schedule)
- 63. Paving (see schedule)
- 64. Paving (see schedule)
- 65. Paving (see schedule)
- 66. Paving (see schedule)
- 67. Paving (see schedule)
- 68. Paving (see schedule)
- 69. Paving (see schedule)
- 70. Paving (see schedule)
- 71. Paving (see schedule)
- 72. Paving (see schedule)
- 73. Paving (see schedule)
- 74. Paving (see schedule)
- 75. Paving (see schedule)
- 76. Paving (see schedule)
- 77. Paving (see schedule)
- 78. Paving (see schedule)
- 79. Paving (see schedule)
- 80. Paving (see schedule)
- 81. Paving (see schedule)
- 82. Paving (see schedule)
- 83. Paving (see schedule)
- 84. Paving (see schedule)
- 85. Paving (see schedule)
- 86. Paving (see schedule)
- 87. Paving (see schedule)
- 88. Paving (see schedule)
- 89. Paving (see schedule)
- 90. Paving (see schedule)
- 91. Paving (see schedule)
- 92. Paving (see schedule)
- 93. Paving (see schedule)
- 94. Paving (see schedule)
- 95. Paving (see schedule)
- 96. Paving (see schedule)
- 97. Paving (see schedule)
- 98. Paving (see schedule)
- 99. Paving (see schedule)
- 100. Paving (see schedule)

Softworks



- 1. Tree (see schedule)
- 2. Tree (see schedule)
- 3. Tree (see schedule)
- 4. Tree (see schedule)
- 5. Tree (see schedule)
- 6. Tree (see schedule)
- 7. Tree (see schedule)
- 8. Tree (see schedule)
- 9. Tree (see schedule)
- 10. Tree (see schedule)
- 11. Tree (see schedule)
- 12. Tree (see schedule)
- 13. Tree (see schedule)
- 14. Tree (see schedule)
- 15. Tree (see schedule)
- 16. Tree (see schedule)
- 17. Tree (see schedule)
- 18. Tree (see schedule)
- 19. Tree (see schedule)
- 20. Tree (see schedule)
- 21. Tree (see schedule)
- 22. Tree (see schedule)
- 23. Tree (see schedule)
- 24. Tree (see schedule)
- 25. Tree (see schedule)
- 26. Tree (see schedule)
- 27. Tree (see schedule)
- 28. Tree (see schedule)
- 29. Tree (see schedule)
- 30. Tree (see schedule)
- 31. Tree (see schedule)
- 32. Tree (see schedule)
- 33. Tree (see schedule)
- 34. Tree (see schedule)
- 35. Tree (see schedule)
- 36. Tree (see schedule)
- 37. Tree (see schedule)
- 38. Tree (see schedule)
- 39. Tree (see schedule)
- 40. Tree (see schedule)
- 41. Tree (see schedule)
- 42. Tree (see schedule)
- 43. Tree (see schedule)
- 44. Tree (see schedule)
- 45. Tree (see schedule)
- 46. Tree (see schedule)
- 47. Tree (see schedule)
- 48. Tree (see schedule)
- 49. Tree (see schedule)
- 50. Tree (see schedule)
- 51. Tree (see schedule)
- 52. Tree (see schedule)
- 53. Tree (see schedule)
- 54. Tree (see schedule)
- 55. Tree (see schedule)
- 56. Tree (see schedule)
- 57. Tree (see schedule)
- 58. Tree (see schedule)
- 59. Tree (see schedule)
- 60. Tree (see schedule)
- 61. Tree (see schedule)
- 62. Tree (see schedule)
- 63. Tree (see schedule)
- 64. Tree (see schedule)
- 65. Tree (see schedule)
- 66. Tree (see schedule)
- 67. Tree (see schedule)
- 68. Tree (see schedule)
- 69. Tree (see schedule)
- 70. Tree (see schedule)
- 71. Tree (see schedule)
- 72. Tree (see schedule)
- 73. Tree (see schedule)
- 74. Tree (see schedule)
- 75. Tree (see schedule)
- 76. Tree (see schedule)
- 77. Tree (see schedule)
- 78. Tree (see schedule)
- 79. Tree (see schedule)
- 80. Tree (see schedule)
- 81. Tree (see schedule)
- 82. Tree (see schedule)
- 83. Tree (see schedule)
- 84. Tree (see schedule)
- 85. Tree (see schedule)
- 86. Tree (see schedule)
- 87. Tree (see schedule)
- 88. Tree (see schedule)
- 89. Tree (see schedule)
- 90. Tree (see schedule)
- 91. Tree (see schedule)
- 92. Tree (see schedule)
- 93. Tree (see schedule)
- 94. Tree (see schedule)
- 95. Tree (see schedule)
- 96. Tree (see schedule)
- 97. Tree (see schedule)
- 98. Tree (see schedule)
- 99. Tree (see schedule)
- 100. Tree (see schedule)



Page 23



The Galleries
Marshot
 Landscaping and Site Works
 Full Level Details 4 of 4
 Level 01 and 05
 Date: 10/10/2023
 Scale: 1:1000
 Drawn by: [Name]
 Checked by: [Name]
 Date: 10/10/2023

















Western Residents' Communal Garden - Car Park Site



High Street view of Block D









Proposed Street A

Proposed Street J

Proposed Galleria Walk

Proposed Street H

Proposed Street B





High Street view of Books H + J looking down Gallery Walk











WELLINGTON ST

GIVE WAY

NatWest

ROAD CLOSURE
9:30 to 16:00
FROM 19 - 10 - 20
FOR 66 WEEKS

FOOTWAY CLOSED

NEW ROAD LAYOUT FOR SOCIAL DISTANCING



Eastern view from Victoria Road



Page 45



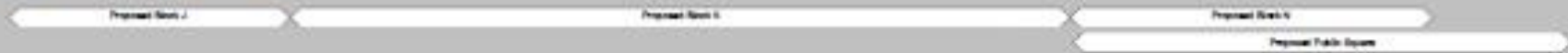
















SPATIAL COMPARISONS
GALLERY WALK LOOKING TOWARD GALLERY SQUARE







View from Public Square



Aerial view from north





Development Management Committee

Item 4: 20/00508/FULPP

The Galleries, High Street, Aldershot

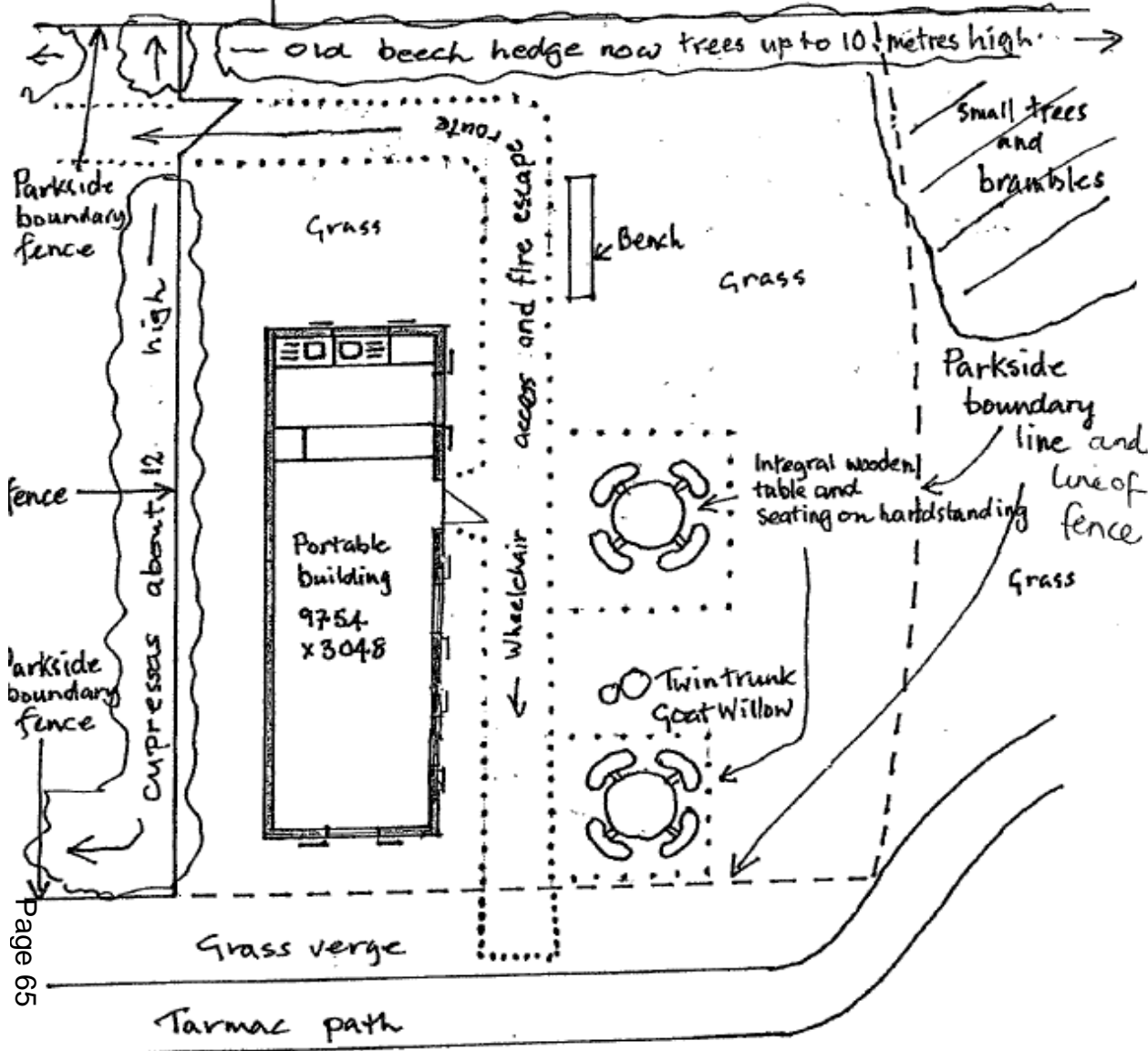
Development Management Committee

Item 5: 20/00700/COU

Parkside Centre, 57 Guildford Road,
Aldershot



← Back gardens to adjacent housing →



N

Page 65

Public Park







Development Management Committee

Item 5: 20/00700/COU

Parkside Centre, 57 Guildford Road,
Aldershot

Development Management Committee

Agenda item 4: Appeals Progress Report

Development Management Committee

Agenda item 5: Planning (Development Management) Summary Report for the Quarter July-September 2020

Development Management Committee

11th November 2020

The meeting has now finished

Development Management
Committee

1th November 2020

Page 73



This page is intentionally left blank